

GEOH'S GEORGIA WAIVERS GUIDE

*Everything you need to know about
Georgia Waivers!*



G E O H . A P P



GEORGIA WAIVERS GUIDE

Learn more GEOH tips on how to help your clients!

G E O H . A P P

DISCLAIMER:

This guide is intended for home care agency owners and aims to provide valuable insights and information on various caregiver training topics. However, it is important to note that this guide does not cover all possible caregiver training topics and should not be considered exhaustive.

While we strive to ensure the accuracy and relevance of the information provided, we cannot guarantee that all aspects of caregiver training are included or up-to-date. Users are encouraged to consult additional resources and seek professional advice when necessary.

We disclaim any liability for any errors or omissions in the content of this guide or any actions taken based on the information provided herein. The content is provided "as is" without warranties of any kind, either express or implied. By using this guide, you agree to hold us harmless from any claims, losses, or damages arising from its use. Please refer to more comprehensive resources or consult with industry professionals to ensure you have all necessary information for effective caregiver training.

WHAT ARE WAIVER PROGRAMS?

State programs that waive the traditional Medicaid structure to help serve a particular subgroup of Medicaid recipients.



CONTENTS

1
ELDERLY AND DISABLED WAIVER

2
SERVICE OPTIONS USING RESOURCES IN A
COMMUNITY ENVIRONMENT
(SOURCE)

3
COMMUNITY CARE SERVICE PROGRAM
(CCSP)

4
INDEPENDENT CARE WAIVER PROGRAM
(ICWP)

5
NEW OPTIONS WAIVER PROGRAM (NOW)
& COMPREHENSIVE SUPPORTS WAIVER
PROGRAM (COMP)

6
GEORGIA PEDIATRICS PROGRAM (GAPP)



1

CHAPTER

ELDERLY & DISABLED

GEOH.APP

PURPOSE:

- To serve frail, elderly, and disabled Georgians over the age of 65 who are eligible for Homecare based services

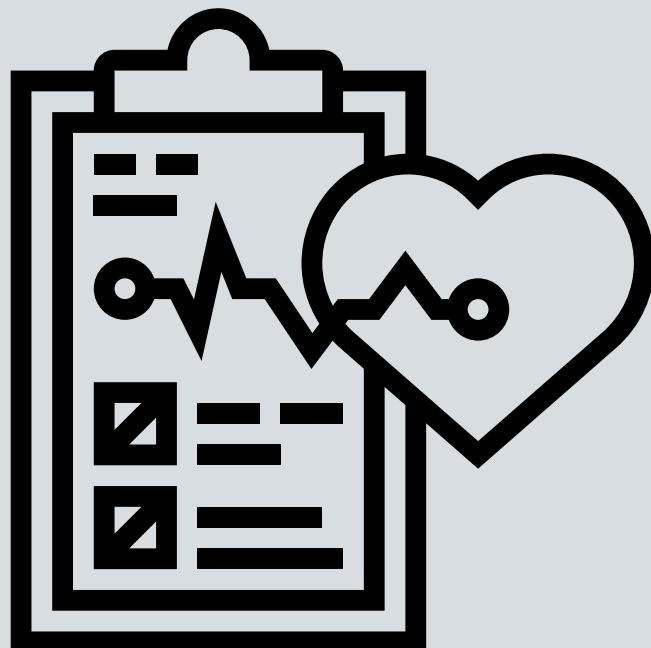
MADE UP OF 2 SUB-PROGRAMS:

- Service Options Using Resources in a Community Environment (SOURCE)
- Community Care Services Program (CCSP)



1. CORE SERVICES:

- Service Coordination (logging visits)
- Personal Support Services (bathing)
- Home Health Services (nursing)
- Respite Care (caregiver relief)
- Emergency Response Services (911)





2

CHAPTER

SOURCE

GEOH.APP

ADDITIONAL SERVICES WITH SOURCE:

- 24hr Access to a Case Manager
- Alternate Living Services
- Extended Home Health
- Home Delivered Meals
- Adult Day Health Care

GEOH

3

CHAPTER

CCSP

GEOH.APP

ADDITIONAL SERVICES WITH CCSP:

- Structured Family Caregiver
- Alternate Living Services
- Home-Delivered Meals
- Adult Day Health

FACT SHEET



Summary of Eligibility Criteria for CCSP Services

- Functional impairment caused by physical limitations.
- Approval by a physician of the need for an intermediate level of nursing home care (LOC) and development of a care plan.
- Medicaid eligible or potentially eligible based on a financial screening.
- Medicaid eligible after admission to CCSP.
- Client chooses to receive services in the home and community rather than in a nursing home.
- Participation in one waiver program at a time.

NOTE: Alzheimer's and other types of dementia are physical conditions.

HOW TO APPLY

Contact your relevant county branch of the Georgia Aging and Disability Resource Connections Department (ADRC)

Website -

https://www.georgiaadrc.com/how_do_i/contact_us/index.php

OR

Contact your local Agency Area on Aging Division

Website -

https://www.georgiaadrc.com/how_do_i/contact_us/index.php

GEOH

4

CHAPTER

ICWP

GEOH.APP

PURPOSE:

- To serve Georgians between the ages of 21 and 64 with nursing facility/hospital level of care requirements

PAYOR:

- Georgia Medicaid Department of Community Health (DCH)



1. CORE SERVICES:

- Service Coordination (logging visits)
- Personal Support Services (bathing)
- Home Health Services (nursing)
- Respite Care (caregiver relief)
- Emergency Response Services (911)

2. ADDITIONAL SERVICES:

- Specialized Medical Equipment and Supplies
- Counseling
- Appropriate Home Modification
- Alternate Living Services (ALS)

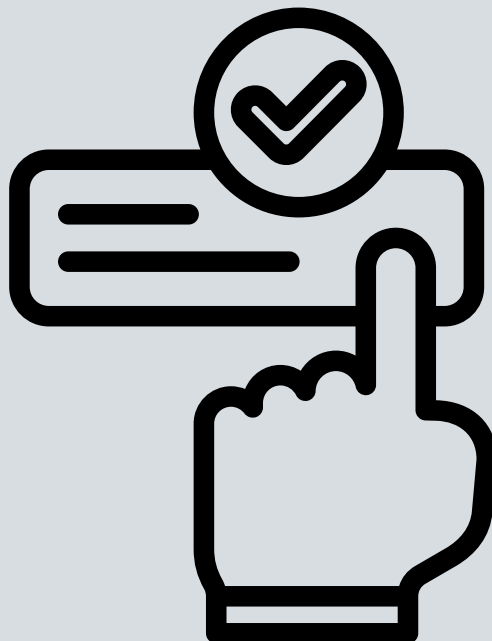
HOW TO APPLY

Contact Alliant Georgia Medical Care Foundation (GMCF) using the phone number or website below:

Phone Number - 800 – 982 – 0411

OR

Website - <http://www.gmcf.org>





5

CHAPTER

NOW & COMP

GEOH.APP

PURPOSE:

- To provide services and support for people with intellectual or developmental disabilities

RECIPIENTS:

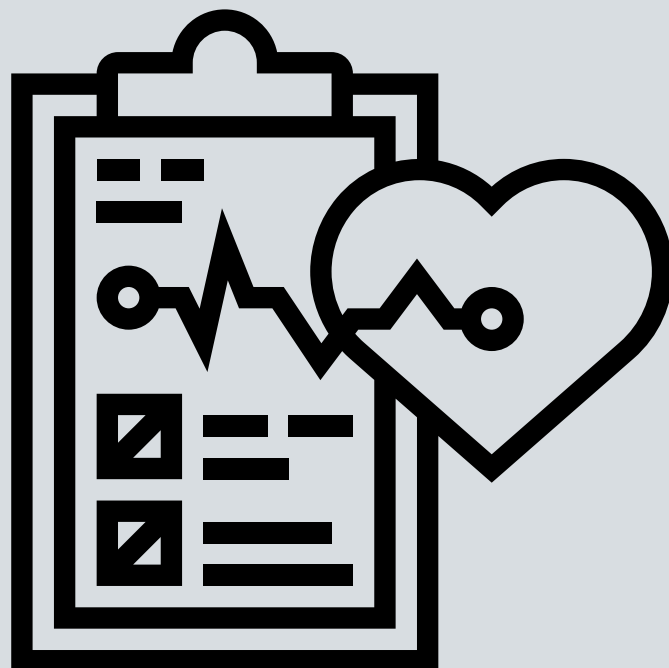
over 12,000

PAYOR:

- Georgia Medicaid
Department of Behavioral Health and Developmental Disabilities (DBHDD)

1. CORE SERVICES:

- Service Coordination (logging visits)
- Personal Support Services (bathing)
- Home Health Services (nursing)
- Respite Care (caregiver relief)
- Emergency Response Services (911)



2. ADDITIONAL SERVICES:

- Adult
Dental/Nursing/Occupational
Therapy Services
- Adult Speech and Language
- Additional Staffing Services
- Behavioral Support services
Level I & II
- Community
Access/Guide/Living Support
Services
- Environmental Accessibility
- Adaptation Services
- Financial Support Services
- Individual Directed Goods and
Services
- Interpreted Services
- Natural Support Training
Services
- Nutrition Services
- Pre-vocational Services

2. CONTINUED ADDITIONAL SERVICES:

- Specialized Medical
- Equipment Services
- Specialized Medical
Supplies Services
- Intensive Support
Coordination Services
- Supported Employment
Services
- Transportation Services
- Vehicle Adaptation Services

FACT SHEET



GEORGIA DEPARTMENT
OF COMMUNITY HEALTH

Eligibility for Both Programs

Individuals who meet the level of care that would be required in an intermediate-care facility for people with intellectual disabilities (ICF-ID) may be eligible for home- and community-based services as an alternative through Georgia's Medicaid NOW and COMP waiver programs.

To qualify for these waiver programs and be offered the choice of community-based services instead of institutional care, the individual must first meet the criteria for Medicaid payment in an institution and certain other criteria.

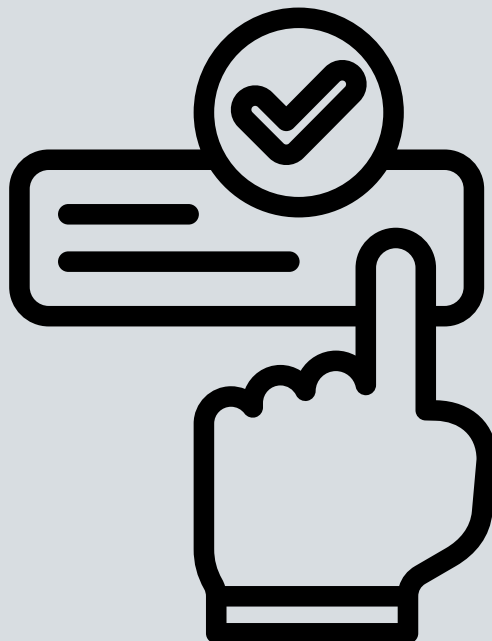
Specific qualifications:

- Are categorically eligible Medicaid recipients.
- Have a diagnosis of an intellectual disability and/or a closely related condition.
- Are currently receiving the level of care provided in an ICF-ID that is reimbursable under the State Plan, and for whom home- and community-based services are determined to be an appropriate alternative.
- Are likely to require the level of care provided in an ICF-ID that would be reimbursable under the State Plan in the absence of home- and community-based services that are determined to be an appropriate alternative.

HOW TO APPLY

Contact the Department of Behavioral Health and Developmental Disabilities at the website below:

<https://dbhdd.georgia.gov/be-dbhdd/be-compassionate/how-do-i-apply-dd-services>



HOW TO APPLY

HOW DO I ...

Apply for DD Services?

The New Options Waiver (NOW) and the Comprehensive Supports Waiver Program (COMP) offer **home- and community-based services** for people with intellectual or developmental disabilities (I/DD). The Department of Community Health (DCH) administers Medicaid which delegates the day-to-day operation of the NOW/COMP Waiver Programs to the Department of Behavioral Health and Developmental Disabilities (DBHDD).

ELIGIBILITY

To be eligible for NOW or COMP Medicaid Waiver services, a person must have an intellectual disability - or a closely related developmental disability, such as autism, cerebral palsy, or epilepsy - which substantially impairs intellectual or adaptive functioning. The disability must have originated at birth or during the developmental years (by age 18 for an intellectual disability, or by age 22 for a developmental disability). Complete eligibility information is available in Part I of the **DBHDD Provider Manual for Community Developmental Disability Providers**.

SERVICES

A list of **Home** and **Community-Based** Services and a description of each service can be found on the **DBHDD website**. These lists do not include institutional services, as institution-based services are inconsistent with the intent and requirements of Section 1915 of the Social Security Act, the requirements established by the Centers for Medicare and Medicaid Services (CMS), and Georgia's NOW and COMP waiver policies.

MEDICAID

All Medicaid Waiver services are funded through Medicaid. Information on how to apply for Medicaid is available on the **Department of Community Health** website. The family will play an important role in obtaining Medicaid for the individual in need. The DBHDD **Regional Field Offices** can provide assistance as needed. However, DBHDD is not authorized to make Medicaid eligibility determinations.



6

CHAPTER

GAPP PROGRAM

GEOH.APP

PURPOSE:

- To provide services to medically fragile children under 21 years of age with multiple system diagnoses

RECIPIENTS:

over 7,700

PAYOR:

- Georgia Medicaid
Department of Behavioral Health and Developmental Disabilities (DBHDD)



1. CORE SERVICES:

- Service Coordination (logging visits)
- Personal Support Services (bathing)
- Home Health Services (nursing)
- Respite Care (caregiver relief)
- Emergency Response Services (911)

2. ADDITIONAL SERVICES:

- Skilled Nursing Care
- Medically Necessary Personal Support

HOW TO APPLY

Contact the Georgia Pediatric Program (GAPP) Specialist at the phone number below:

(404) 657-7882

OR

Contact a GAPP provider agency directly using the GAPP provider manual on the GAMMIS website:

<https://www.mmis.georgia.gov/portal/PubAccess.Provider%20Information/Provider%20Manuals/tabId/18/Default.aspx>



7

CHAPTER

WAIVER PROCEDURE CODE EXAMPLES

GEOH.APP

Supported Employment Services:

Service	Unit	Procedure Code	Rate
Supported Employment-Group, 1:8-1:10	15 minutes	T2019-HQ-U1	\$2.47
Supported Employment-Group, 1:8-1:10, Co-Employer	15 minutes	T2019-HQ-UA-U1	\$2.47
Supported Employment-Group, 1:8-1:10, Deaf and Hard of Hearing	15 minutes	T2019-HQ-UD-U1	\$2.63
Supported Employment-Group, 1:5-1:7	15 minutes	T2019-HQ-U2	\$3.38
Supported Employment-Group, 1:5-1:7, Co-Employer	15 minutes	T2019- HQ-UA-U2	\$3.38
Supported Employment-Group, 1:5-1:7, Deaf and Hard of Hearing	15 minutes	T2019- HQ-UD-U2	\$3.63
Supported Employment-Group, 1:3-1:4	15 minutes	T2019-HQ-U3	\$5.37
Supported Employment-Group, 1:3-1:4, Co-Employer	15 minutes	T2019- HQ-UA-U3	\$5.37
Supported Employment-Group, 1:3-1:4, Deaf and Hard of Hearing	15 minutes	T2019- HQ-UD-U3	\$5.78
Supported Employment-Group, 1:2	15 minutes	T2019-HQ-U4	\$8.95

Q. Respite Services

Service	Unit	Procedure Code	Rate
Respite-15-Minutes 1 Member In Home	15 min	S5150	\$9.38
Respite-15-Minutes 1 Member, self-directed In Home	1 unit	S5150-UC	\$1.00
Respite-15-Minutes 1 Member, co-employer In Home	15 min	S5150-UA	\$9.38
Respite-1 Member In Home, Deaf and Hard of Hearing	15 min	S5150-UD	\$10.50
Respite-15-Minutes 2 Member In Home	15 min	S5150-UN	\$5.16
Respite-15-Minutes 2 Member, self-directed In Home	1 unit	S5150-UN-UC	\$1.00
Respite-15-Minutes 2 Member, co-employer In Home	15 min	S5150-UN-UA	\$5.16
Respite-2 Members In Home, Deaf and Hard of Hearing	15 min	S5150-UN-UD	\$5.77
Respite-15-Minutes	15 min	S5150-UP	\$3.75

WAIVER PROCEDURE CODE EXAMPLES

More Codes can be found on the
“Provider Manual” page of the
GAMMIS website at the link
below:

<https://www.mmis.georgia.gov/portal/PubAccess.Provider%20Information/Provider%20Manuals/tabled/18/Default.aspx>

We hope you find these tips
and printables helpful for
running your agency! We have
hope that great things are in
store for your agency, and if
you ever need help remember
we here at GEOH are here for
you!

- The GEOH team



**"There is nothing impossible
to they who will try.**

Alexander the Great



YOU CAN DO THIS!

Questions? Ask us here: (317) 455-3218

Q U E S T I O N S ?

[GEOH.APP](https://www.geoh.com/app)