

# GEOH'S 80/20 RULE GUIDE

*Everything you need to know about the new 80/20 Rule.*



G E O H . A P P



# 80/20 RULE GUIDE

Learn more about the 80/20 Rule you may not have known about!

G E O H . A P P

# CONTENTS

**1**

WHAT IS THE 80/20 RULE?

**2**

INCLUSIONS AND EXCLUSIONS

**3**

CENTERS FOR MEDICARE AND MEDICAID SERVICES

**4**

NEXT OPTIONS

**5**

WHO THIS MIGHT AFFECT?



# 1

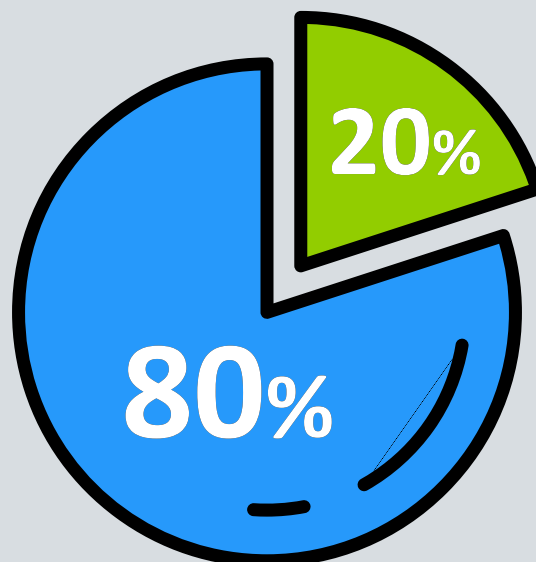
CHAPTER

**WHAT IS THE 80/20  
RULE?**

GEOH.APP

# WHAT IS THE 80/20 RULE?

- 80%- Medicaid HCBS funds are used to pay for direct care workers like nurses and home care aids.
- 20%- allocated for other operational costs/administrative costs.



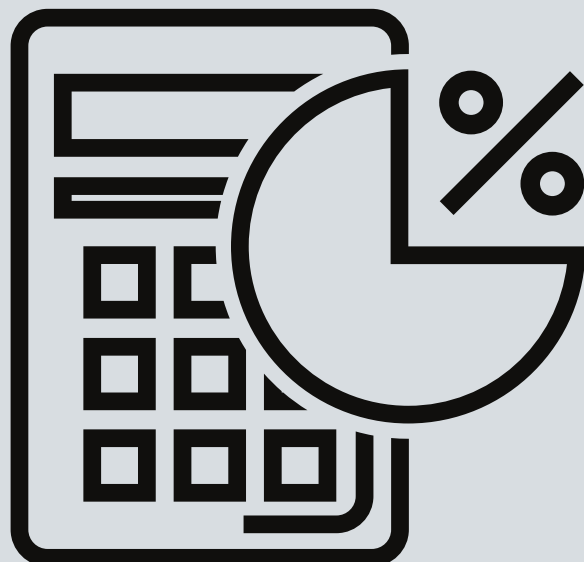
# WHEN IS THIS HAPPENING?

- 4 years states must begin reporting on the percentages of Medicaid payment for caregivers
- In 6 years the 80% minimum payment provision becomes into effect (2030)



# HOW DOES THIS WORK?

- If you have \$100,000 in revenue but you need to exclude \$10,000 for training, travel and PPE.
- Then you are left over with \$90,000.
- 80%=\$72,000 goes to employees
- 20%=\$18,000 goes to admin



GEOH

# 2

CHAPTER

## INCLUSIONS & EXCLUSIONS

GEOH.APP



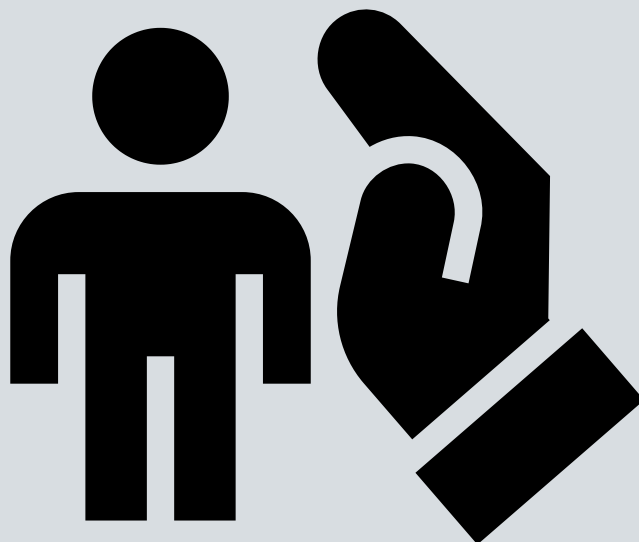
# WHAT IS INCLUDED?

- States to adopt a separate percentage for small providers and/or a hardship exemption based on a transparent process and objective criteria.



# WHAT IS EXCLUDED?

- Training materials
- Travel costs (mileage reimbursement or public transportation)
- Personal Protective Equipment
- Habilitation services are not included in the rule





# 3

CHAPTER

## CENTERS FOR MEDICARE AND MEDICAID SERVICES

GEOH.APP

# WHAT IS CMS PROPOSING?

- Increase oversight and monitoring of services
- Require states to establish grievance systems for members to share feedback
- Have states form an advisory group to advice and consult on provider payments/caregiver pay





# 4

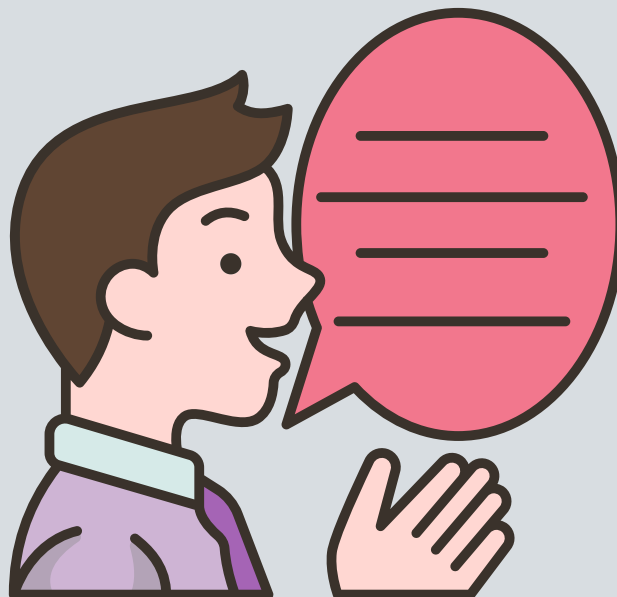
CHAPTER

## NEXT OPTIONS

GEOH.APP

# WHAT CAN YOU DO?

- Give a voice to the industry as a constituent
- Help educate members of Congress on the issue
- Write to your congressman on how this will affect your agency!
- Articulate the previously mentioned reasons for opposing the 80/20





# 5

CHAPTER

**WHO WILL THIS  
AFFECT?**

GEOH.APP

# WHO IS THIS IMPACTING?

- Final rule is a area of concern in rural healthcare.





We hope you find these tips  
and printables helpful for  
running your agency! We have  
hope that great things are in  
store for your agency, and if  
you ever need help remember  
we here at GEOH are here for  
you!

- The GEOH team



**"There is nothing impossible  
to they who will try.**

Alexander the Great



# YOU CAN DO THIS!

Questions? Ask us here: (317) 455-3218

Q U E S T I O N S ?

[GEOH.APP](https://www.geoh.com/app)